

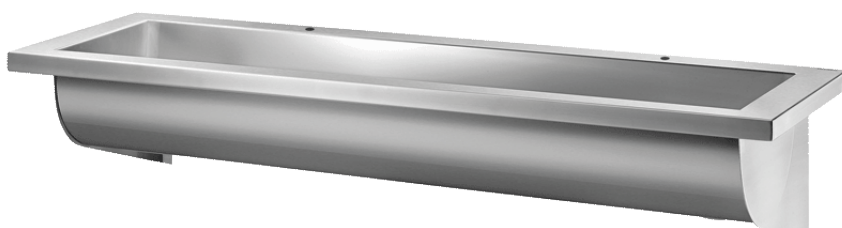
DELABIE

[Home](#) > [Our products](#) > [Stainless Steel Sanitary Ware](#) > [Washbasins](#) > [Wall-mounted CANAL wash trough](#)

Wall-mounted CANAL wash trough

Ref. 121250

Polished satin 304 stainless steel - L.
1200mm



By continuing your navigation on this website you accept the use of cookies to facilitate navigation, enhance your experience and produce visit statistics. [Learn more.](#)

DESCRIPTION

Wall-mounted CANAL wash trough

[Ref. 121250](#)

Wall-mounted wash trough for 2 posts.

Bacteriostatic 304 stainless steel.

Polished satin finish.

Stainless steel thickness: 1mm for the bowl, 1.5mm for surround and fixing brackets.

Easy to install: no joint concealers to install, lightweight wash trough.

Drainage on the right.

With 2 tap holes Ø 22mm.

Supplied with 1½" waste.

Without overflow.

Supplied with fixing brackets and fixings.

CE marked. Complies with European standard EN 14296.

Weight: 8.8kg.

Option to add a bacteriostatic 304 stainless steel splashback (ref. 100250).

ADVANTAGES

- Bacteriostatic 304 stainless steel and polished surface

TECHNICAL FEATURES

Wall-mounted CANAL wash trough

Ref. 121250

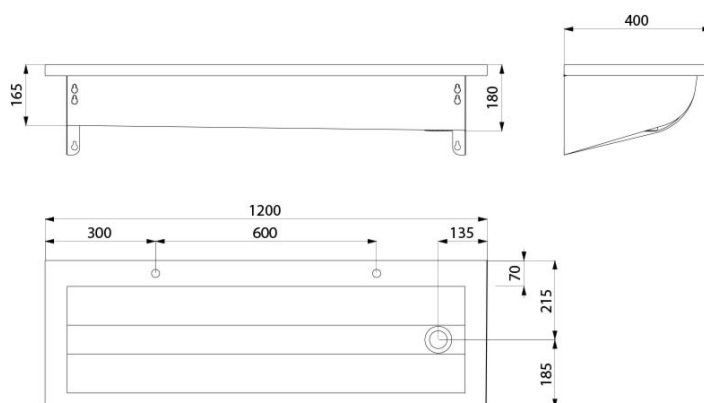
Height 250mm

Length 1200mm

Width 400mm

Thickness 1mm (bowl) and 1.5mm (surround and fixing brackets)

Finish Polished satin 304 stainless steel



[Associated products](#)

© DELABIE